




HASTINGS

SEAFRONT ROUTE ON FOOT & BY BIKE

To judge distances, use the vertical lines on the map spaced 1km (0.6 miles) apart:

Approximate walking time per km 10 minutes

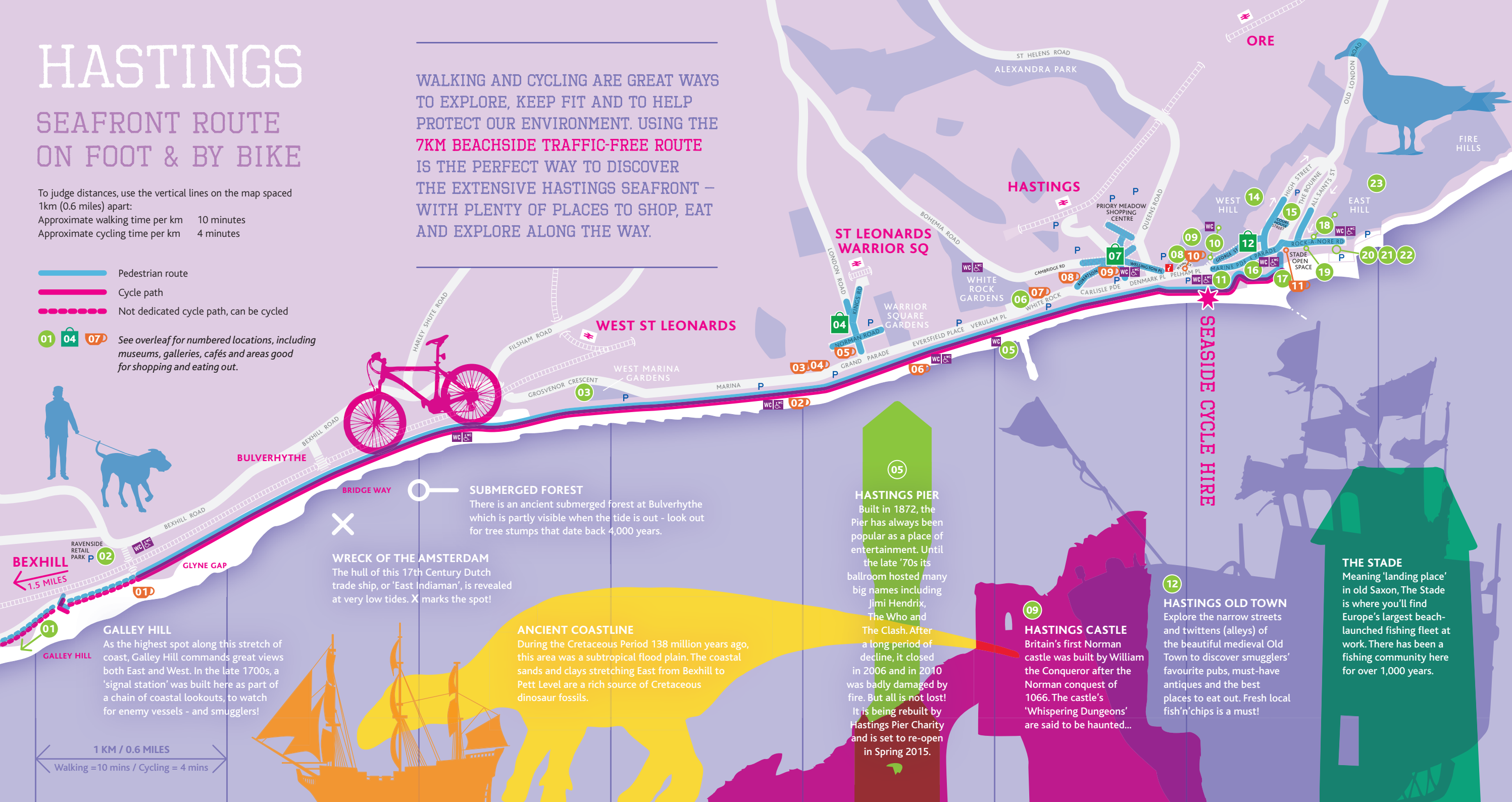
Approximate cycling time per km 4 minutes

-  Pedestrian route
-  Cycle path
-  Not dedicated cycle path, can be cycled

01 04 07 See overleaf for numbered locations, including museums, galleries, cafés and areas good for shopping and eating out.



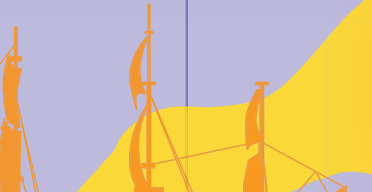
WALKING AND CYCLING ARE GREAT WAYS TO EXPLORE, KEEP FIT AND TO HELP PROTECT OUR ENVIRONMENT. USING THE 7KM BEACHSIDE TRAFFIC-FREE ROUTE IS THE PERFECT WAY TO DISCOVER THE EXTENSIVE HASTINGS SEAFRONT – WITH PLENTY OF PLACES TO SHOP, EAT AND EXPLORE ALONG THE WAY.



SUBMERGED FOREST
There is an ancient submerged forest at Bulverhythe which is partly visible when the tide is out - look out for tree stumps that date back 4,000 years.



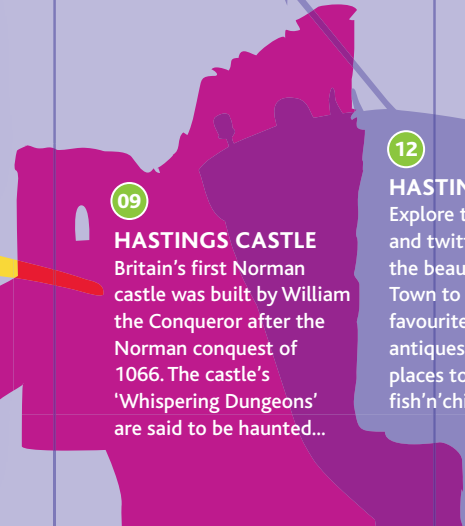
WRECK OF THE AMSTERDAM
The hull of this 17th Century Dutch trade ship, or 'East Indiaman', is revealed at very low tides. X marks the spot!



ANCIENT COASTLINE
During the Cretaceous Period 138 million years ago, this area was a subtropical flood plain. The coastal sands and clays stretching East from Bexhill to Pett Level are a rich source of Cretaceous dinosaur fossils.



HASTINGS PIER
Built in 1872, the Pier has always been popular as a place of entertainment. Until the late '70s its ballroom hosted many big names including Jimi Hendrix, The Who and The Clash. After a long period of decline, it closed in 2006 and in 2010 was badly damaged by fire. But all is not lost! It is being rebuilt by Hastings Pier Charity and is set to re-open in Spring 2015.



HASTINGS CASTLE
Britain's first Norman castle was built by William the Conqueror after the Norman conquest of 1066. The castle's 'Whispering Dungeons' are said to be haunted...



HASTINGS OLD TOWN
Explore the narrow streets and twittens (alleys) of the beautiful medieval Old Town to discover smugglers' favourite pubs, must-have antiques and the best places to eat out. Fresh local fish'n'chips is a must!

THE STADE
Meaning 'landing place' in old Saxon, The Stade is where you'll find Europe's largest beach-launched fishing fleet at work. There has been a fishing community here for over 1,000 years.

1 KM / 0.6 MILES
Walking = 10 mins / Cycling = 4 mins